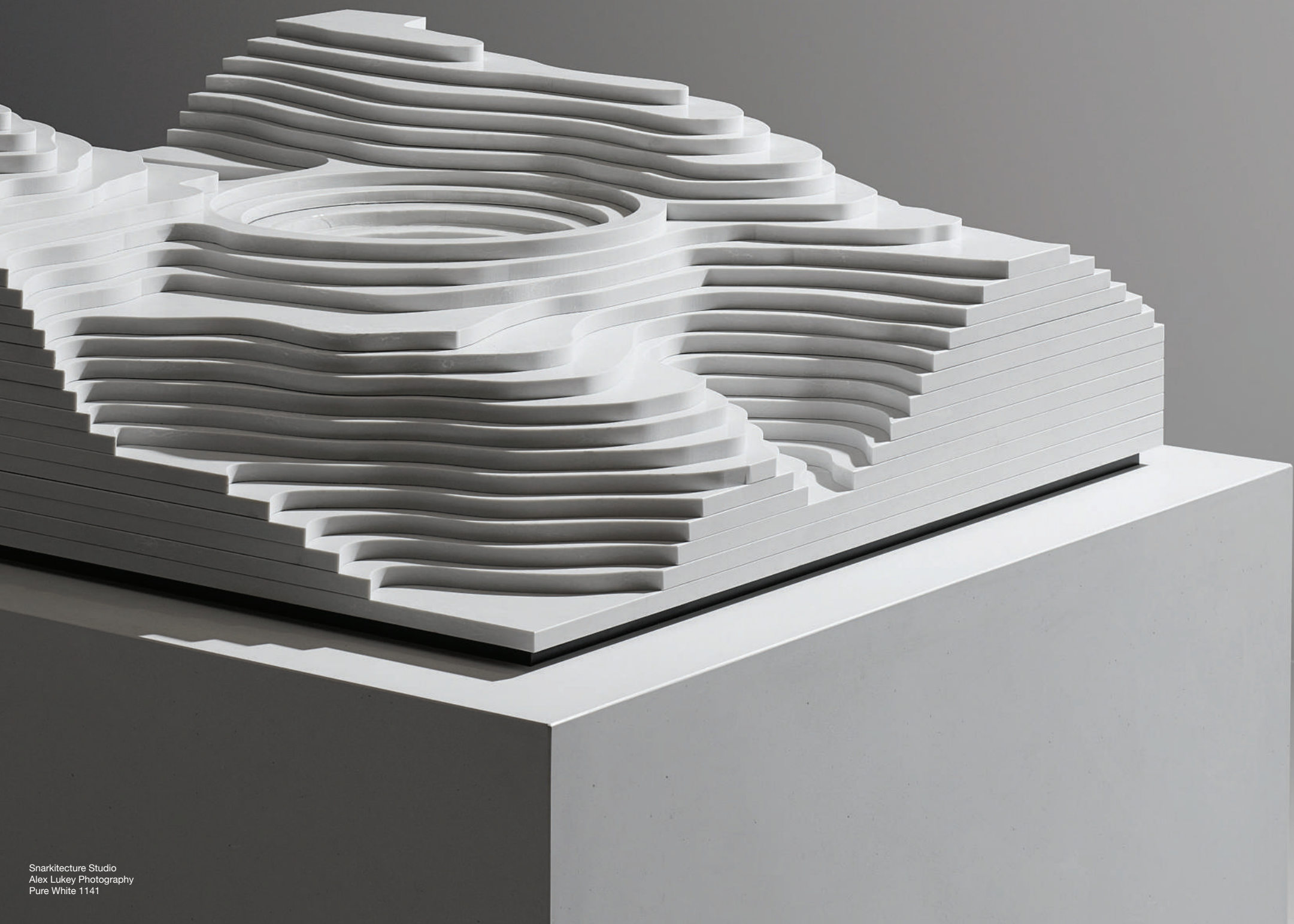


IMPRESSIONS

CONTENT



1	The Original Quartz Surface
4	Design Innovation
7	Creative Vision
9	Environmental Emphasis
10	Inspiring Commercial Interiors
52	Hospitality
72	Food Services
84	Healthcare
88	Urban Development
112	Inspiring Residential Interiors
181	Concetto
203	Beyond Countertops
231	Kitchen Trends Book
238	Colors & Collections
257	Finishes
260	Anatomy
266	Technical Data



THE ORIGINAL QUARTZ SURFACE

Caesarstone pioneered quartz surfaces in 1987 and today is the largest quartz distributor in the world with three global manufacturing facilities and twelve U.S. distribution centers. The pinnacle in sophistication, durability and sanitation, our surfaces are used in high-traffic commercial establishments within hospitality, food service, public buildings, commercial interiors and retail spaces across 40 countries. Since the inception of Caesarstone, the concepts of sustainability, creativity, innovation, performance and quality customer service have been company benchmarks.

Continuous investment in technology, extensive research and development, highly trained personnel and an advanced market infrastructure place Caesarstone at the forefront of design. Caesarstone is publicly traded and is a trusted surface of choice for premier hospitality brands globally.



Caesarstone is renowned for producing the very best surfaces in the industry, designing a variety of perfectly considered shades featuring extraordinarily elegant patterns and textures. So how does its design team start and where do they find their inspiration?



Mor Krisher

Chief Designer

Chief Designer, Mor Krisher, has been with Caesarstone for nearly a decade and has a broad background in design.

“We have been designing surfaces for more than thirty years and since day one our intention has been to push technical and creative boundaries,” says Mor.

“Manufacturing quartz surfaces is a blend of science and art and both aspects hold equal importance. Beauty catches our eye but if a product doesn’t perform then we quickly lose patience. We have an incredible technical R&D team which fortunately means that I can focus my attentions solely on the art of our brand.”

Caesarstone’s global range runs close to 100 different products, varying from monochromatic surfaces in numerous subtle shades through to materials inspired by different types of natural marble, granite and travertine. The demand for the natural look is growing and subsequently Caesarstone’s range is expanding in this area.

“When we start working on new designs for our Supernatural and Ultratural products, we take several different qualities from natural stone and combine them, working on the nuances of the design for many months until we are 100 percent happy. The result is a beautifully natural looking product that can’t actually be found in nature. We can give consumers and architects something unique that can’t actually be found anywhere else.”

Caesarstone’s hyper-real design approach has more recently been applied to products that are wholly more industrial in aesthetic. Concrete. The effect is no less stunning, and the inspiration for these industrial chic surfaces comes from some surprising sources.

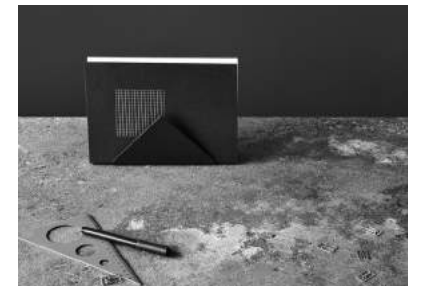
“I love concrete,” says Mor. “We have several products in the Caesarstone Concrete range and we’ve spent lots of time accurately mirroring the color of the material. 4033 Rugged Concrete, released in spring 2017, was a real breakthrough product in which we combined the color and the texture.”

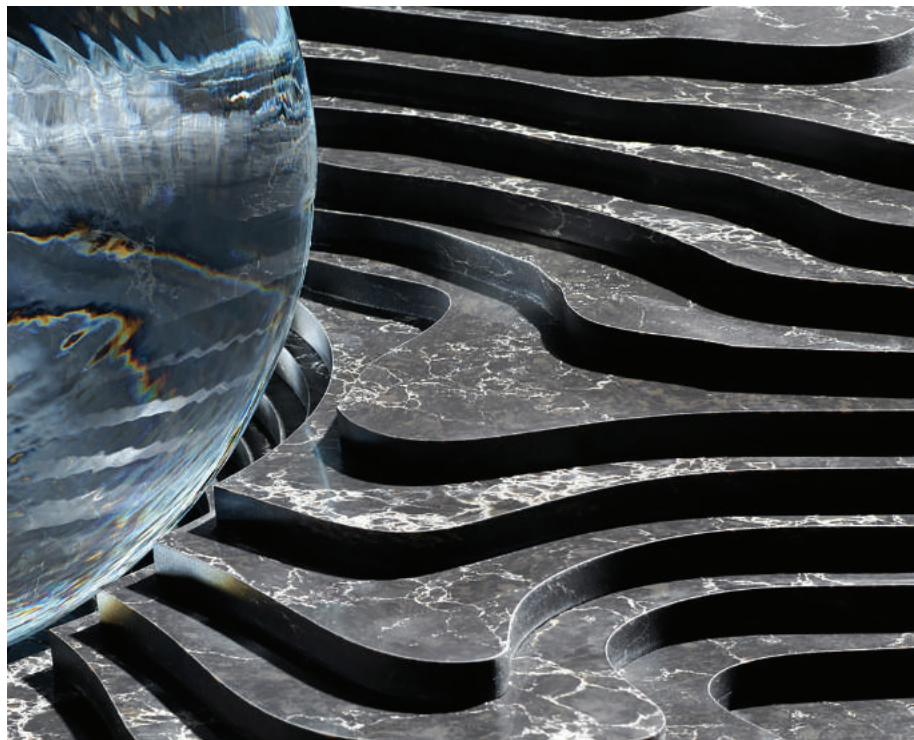
As with all Caesarstone designs, the concept for 4033 Rugged Concrete started with the team sitting in front of a blank piece of paper, pencil in hand, with a highly specific piece of inspiration – a water color painting of the moon. Mor explains, “The painting really captured the rugged nature of the moon’s surface. We were looking at a 2D image which the artist had brought to life in 3D through the use of the most wonderful, deft, technical brush strokes. The mix of whites, greys and blacks was so subtle. It really informed our thinking and helped set the benchmark for what we wanted to achieve.”

The story reflects the broader design approach of Caesarstone, where inspiration is sometimes less than obvious but the results are always breath-taking.

“We are visual creatures and we respond to the color and patterns that surround us, good or bad. I think Caesarstone plays a role in creating environments that inspire, that connect us with nature or that provide the tactility that is so important to human beings.”

Mor concludes, “When I show someone a new Caesarstone product for the first time, they always end up with their hand repeatedly playing across the surface as we talk, often quite unconsciously. That’s when I know we’ve done our job.”





DESIGN INNOVATION

To be an innovator in the surface industry is to constantly push the boundaries of color and finish. The Caesarstone product development and design team taps into the latest technology and trends to create fresh hues, textures and tones. The exploration of color and texture is at the core of Caesarstone innovations. This continuous effort is international in scope and produces a spectrum of unique colors. While nature is always a source of inspiration, moving beyond the conventions gives rise to expressive interpretation that enhances design in new and profound ways.



CREATIVE VISION

It starts as a surface.

The vision is to give architects and designers the power to transform the everyday into the extraordinary. The relationship between the material and the professional is synergistic: each pushes the other to greater creative expression. When addressing tough design challenges, the results are always innovative, functional applications that exemplify smart design. Ultimately, it is what architects and designers do with the surface that confirms Caesarstone position as a creator of world-class material.





ENVIRONMENTAL EMPHASIS

From recycling water used in production to pollution and dust control, Caesarstone strives to ensure a healthy workplace and was the first quartz surfacing company to receive ISO 14001 Environmental Management Systems certification. This eco-conscious attitude extends from production to product, with several colors featuring recycled content.

Specifying Caesarstone in LEED projects can contribute to LEED points. All of the surfaces are low VOC in accordance with GREENGUARD's Indoor Air Quality standards and clean easily with no need for chemical detergents. Our mission is to preserve the planet by creating sustainable products.

Caesarstone quartz surfaces are supported by mindful MATERIALS, the online resource that helps users find architectural building products with various transparency and sustainability attributes. Together, we aim to transform the way building products are selected, providing the means necessary to consider human health and environmental impacts of products in the built environment in an effort to encourage more informed specifications. Learn more at www.mindfulmaterials.com



INSPIRING COMMERCIAL INTERIORS

Caesarstone quartz surfaces are widely used in a variety of commercial applications, offering quality, durability and beauty. It's the ideal choice for use in high-traffic areas that must hold up under more stress, usage and overall handling than residential spaces. Caesarstone is highly regarded by the design and building industry for our superior quality and business reliability with comprehensive aftersales support and ongoing service. Whether designing a more standard brand flag or independent property, luxury through midscale, Caesarstone has options to fit every commercial budget.



BLB&G Office
Pure White 1141



BLB&G Office
White Attica 5143



VIVO DESIGN STUDIOS

BLB&G, San Diego, CA

Pure White 1141
Bianco Drift 6131
Fresh Concrete 4001



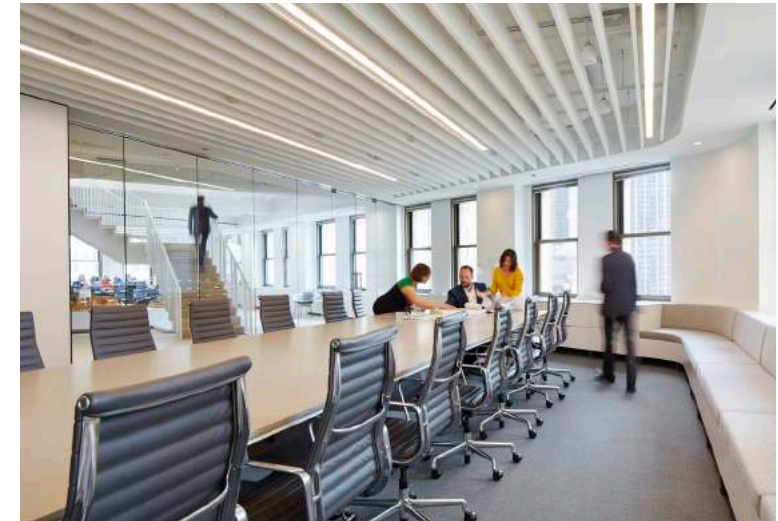


OFFICIAL DESIGN

CIVITAS Capital Group Office, Dallas, TX
Robert Yu Photography

Pure White 1141
Fresh Concrete 4001
Raw Concrete 4004



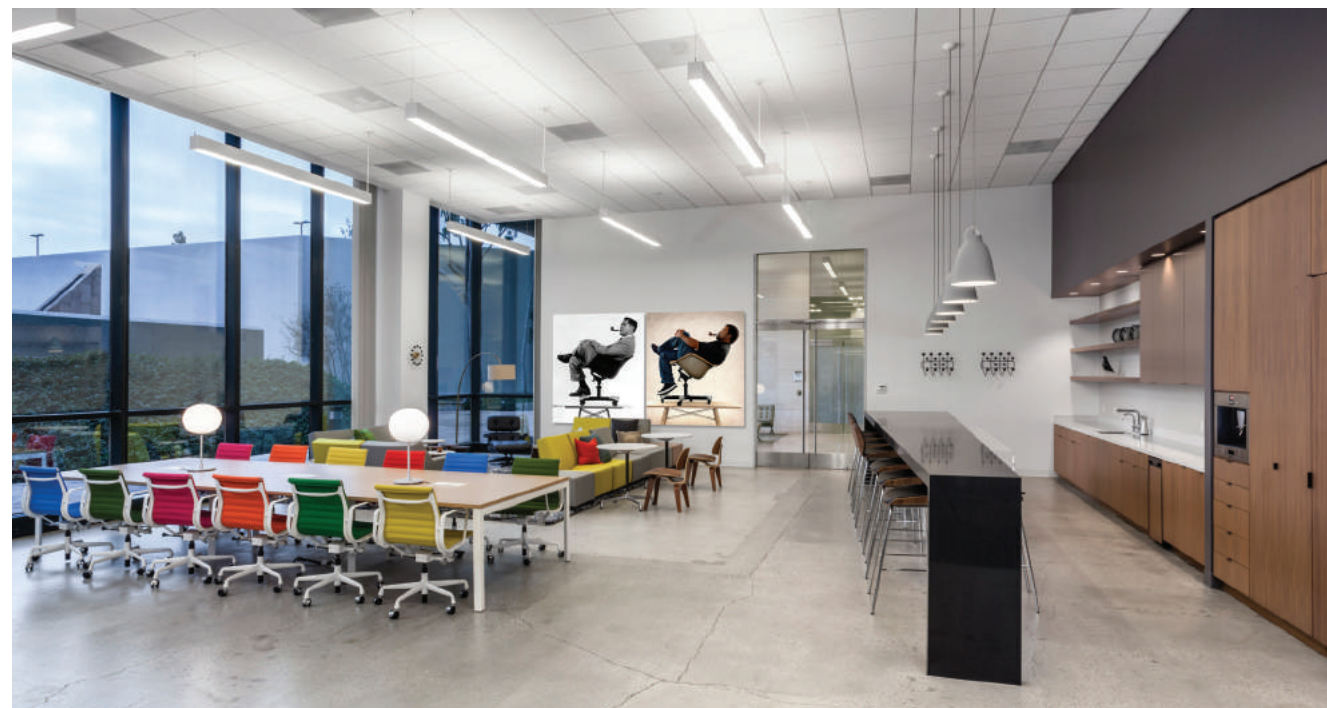


PERKINS+WILL

Office Headquarters, Chicago, IL
Steve Hall Photography

Raw Concrete 4004





RAPT STUDIO

Pivot Interiors, Costa Mesa, CA

Jet Black 3100
Misty Carrera 4141



JPE DESIGN STUDIO

Adelaide SA 5000, Australia
Dave Sievers Photography

Fresh Concrete 4001



THE MESHBERG GROUP / KATHY KUO

Kathy Kuo Design Bar, New York, NY
Joseph De Leo Photography

Pure White 1141

Google, Tel Aviv, Israel — Pure White 1141



Tealium Headquarters, San Diego, CA — Calacatta Nuvo 5131
ZWINK Photography Jet Black 3100



Dallas, TX — Pure White 1141
1856 Studio Photography



OFFICIAL DESIGN

Houndstooth Coffee, Dallas, TX
Robert Yu & Mark Leveno Photography

Raw Concrete 4004





FLOISAND STUDIO

Fonté Coffee Roaster, Seattle, WA — Pure White 1141
Matt Vaagsland Photography



DAN BRUNN ARCHITECTURE

Coffee For Sasquatch, Los Angeles, CA
Aubrey Pick Photography

Calacatta Nuvo 5131



BROOKE SPRECKMAN

Tender Greens, Century City, CA
Bethany Nauert Photography

London Grey 5000





ID STUDIOS, INC.

WD-40 Office, San Diego, CA
ZWINK Photography

Fresh Concrete 4001
Piatra Grey 5003



OTTO DESIGN GROUP

Tarte Tatin, Los Angeles, CA

Raw Concrete 4004
Calacatta Nuvo 5131



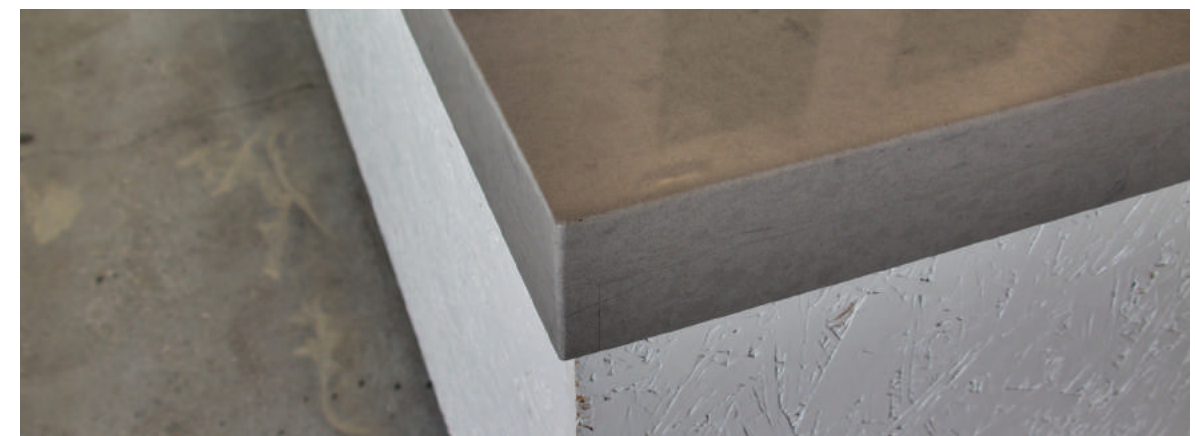


POKÉ ME

South Yarra VIC, Australia ————— Rugged Concrete 4033

LEONG LEONG ARCHITECTURE

Sweet Green Cafe, New York City, NY — Pebble 4030



DAN BRUNN ARCHITECTURE

Yojisan Sushi, Beverly Hills, CA ————— Raw Concrete 4004



TRACY INTERIORS

HC Studio, Brookline, MA — Frosty Carrina 5141
Chelsea Kyle Photography

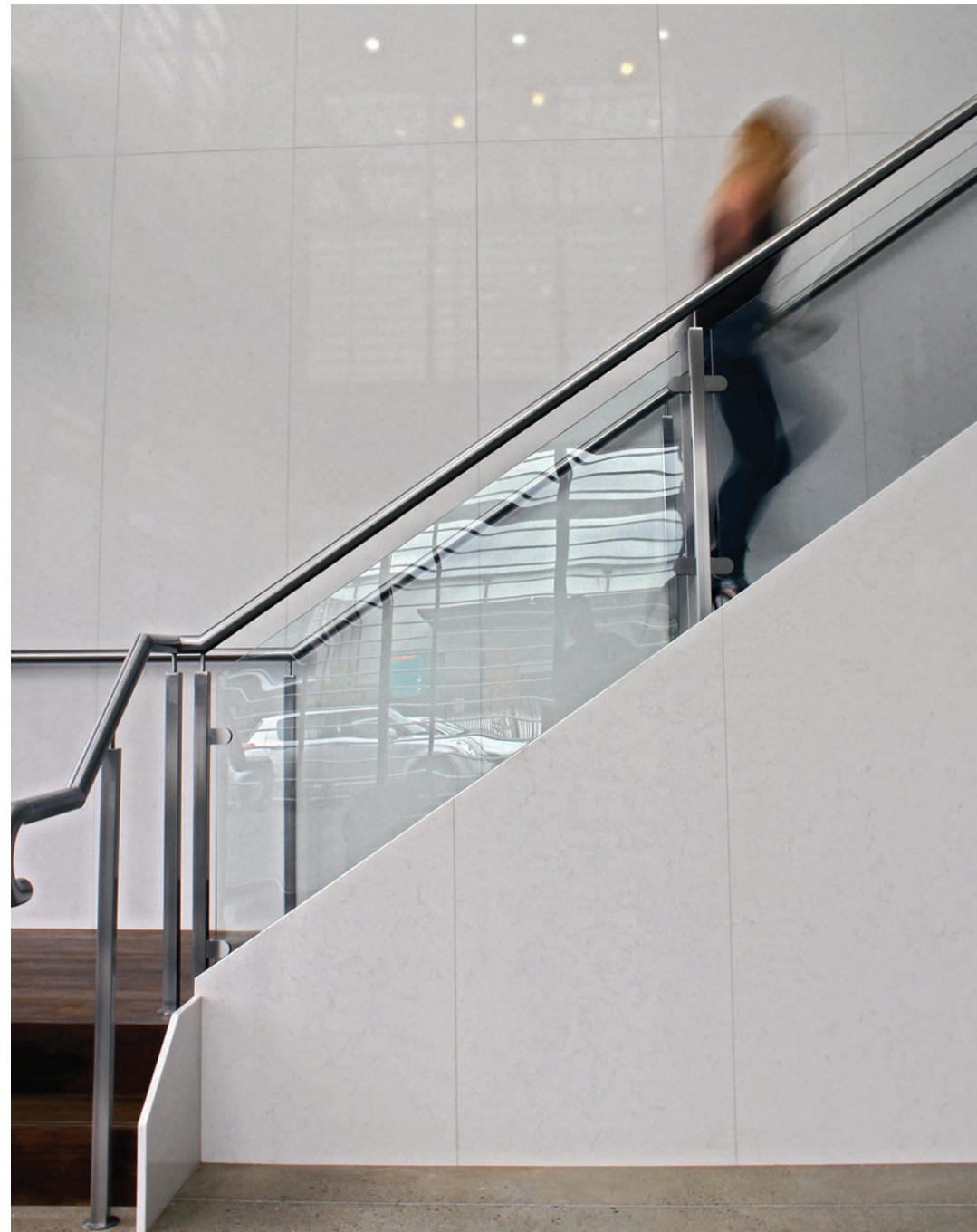


3.1 PHILLIP LIM, SAKS FIFTH AVENUE

New York, NY ————— Pure White 1141



CAESARSTONE USED FOR WALL APPLICATION



CAESARSTONE SHOWROOM

Moorebank, Australia ————— Frosty Carrina 5141

HOSPITALITY

The pinnacle in sophistication, durability and sanitation, Caesarstone quartz surfaces are used in high-traffic commercial establishments within the hospitality industry across the globe.

From bathroom vanities and partitions to concierge counters, Caesarstone offers beautiful and functional quartz surfaces that are durable, flexible, highly impact resistant and resistant to stains, scratches and heat – perfect for high traffic areas. The properties of high quality quartz also meet stringent sanitation requirements, important for guest health and minimizing maintenance for hotel staff. Its nonporous nature never requires waxes or sealing, eliminating additional up costs and making it a low cost of ownership product.

Caesarstone's timeless designs don't lose appeal as trends change, helping maintain a clean and modern aesthetic that will withstand the test of time and is sure to attract new and returning guests. Luxurious yet pragmatic, eco-friendly and efficient, Caesarstone creates distinctive moods and environments for hotels, resorts and all hospitality-related projects.

INSPIRING COMMERCIAL INTERIORS | HOSPITALITY



AVALON CHRISTIE'S PLACE

New York, NY

Pebble 4030



W Hotel, Union Square, NY
Raven 4120 & Blizzard 2141



Sheraton Tribeca, NY
Linen 2230

INSPIRING COMMERCIAL INTERIORS | HOSPITALITY

HOSPITALITY PROJECTS

The Rose Hotel — Chicago, IL
Hilton Garden Inn — Franklin, TN
Element Hotel — Round Rock, TX
Auburn Hills Marriott — Pontiac, MI
Marriott Downtown — Kansas, MO
The Ritz Carlton — Reno, NV
Disney Art Animation Resort — Orlando, FL
Serrano Hotel — San Francisco, CA
72 Townsend — San Francisco, CA
Century Towers — San Francisco, CA
Salesforce Towers — San Francisco, CA
Transbay Block 8 — San Francisco, CA
Element Hotel — Santa Clara, CA
Westin Hotel — Ft. Lauderdale, FL
Hotel Indigo — Mt Pleasant, SC

Hyatt Union Square — New York, NY
Sheraton Tribeca — New York, NY
Hilton Times Square — New York, NY
Dream Hotel — New York, NY
Vdara Hotel — Las Vegas, NV
Aria Hotel — Las Vegas, NV
Element Hotels—National
Country Inn & Suites—National
Holiday Inn Express—National
Atlantis Casino Resort Spa — Reno, NV
Seven Feathers Hotel & Casino Resort — Canyonville, OR
Coushatta Casino — New Orleans, LA
Marriott Auburn Hills — Pontiac, MI
Residence Inn by Marriott — Watertown, MA
W Hotel — Atlanta, GA



RBA GROUP

Hotel Indigo, Mt. Pleasant, South Carolina — Statuario Maximus 5031
Benjamin Galland Photography Clamshell 4130





HYATT TIMES SQUARE

New York, NY ————— Blizzard 2141





BNO DESIGN

Mondrian Hotel, SOHO, NY ————— Buttermilk 4220



HILTON TIMES SQUARE

New York, NY ————— Mocha 2370



Leftover Caesarstone material can be repurposed for applications such as the door sills shown in this image.



DREAM HOTEL TIMES SQUARE

New York, NY ————— London Grey 5000





COURTYARD MARRIOTT

New York, NY ————— Lagos Blue 4350
Nougat 6600



HILTON LA JOLLA

La Jolla, CA ————— Mocha 2370



FOOD SERVICES

Caesarstone quartz surfaces can be used in a variety of commercial food service installations, including those that incorporate heating and cooling equipment. Endorsed by the International Health and Safety Foundation in accordance with international NSF 51 sanitation standards, our quartz working surfaces are safe for use in all food preparation environments. Caesarstone quartz surfaces naturally inhibits mold and bacterial growth, keeping students, staff and visitors healthy and safe.



WEBB FOODSERVICE DESIGN

UCSD, San Diego, CA

Blizzard 2141

STUDIO MAHA

Point Loma Nazarene University, San Diego, CA — Nougat 6600





RG ARCHITECTS

QVC Distribution Center, Ontario, CA ————— Nougat 6600

WEBB FOODSERVICE DESIGN

Gonzaga University, Spokane, WA ————— Raw Concrete 4004





WEBB FOODSERVICE DESIGN

CSU Fullerton, Fullerton, CA — Lagos Blue 4350



WEBB FOODSERVICE DESIGN

William Jessup University, Rocklin, CA ————— Ocean Foam 6141



Caesarstone quartz surfaces are in use today in many environments that require the strictest standards of cleanliness and sterility, making it the ideal choice for use in the healthcare sector. Credited by the International Health and Safety Foundation, our quartz working surfaces are safe for use in laboratories and healthcare facilities alike. We have received worldwide recognition for our commitment to quality, safety, health and environmental standards and are committed to the constant monitoring and review of our processes, standards and results.

Caesarstone quartz surfaces is not affected by solutions of common acids including hydrochloric, muriatic and sulfuric acids. Caesarstone quartz surfaces also resists common laboratory staining agents. It is not permanently stained by povidone-iodine (Betadine), potassium permanganate or tincture of iodine. Caesarstone quartz surfaces resists a wide range of commercial and industrial solvents.



EOS REJUVENATION

Beverly Hills, CA

Statuario Nuvio 5111

UCLA HEALTH

Urgent Care Center, Century City, CA ————— Pure White 1141



RONALD REAGAN UCLA MEDICAL CENTER

Westwood, CA ————— Concrete 2003



URBAN DEVELOPMENT

The Caesarstone Commercial Business Group provides incomparable service and support to the trade by streamlining assistance for commercial projects such as multiunit residential buildings, hotels, restaurants, casinos and other institutions. A dedicated staff of project managers assists architects, designers and other building professionals with costs, lead times, product procurement and competitive turnkey solutions that save trade clients thousands of dollars and make value engineering virtually a thing of the past.

MULTIUNIT PROJECTS

- Riverside Center Building 1 & 4 – New York, NY
- Henley on the Hudson (Lennar Multifamily) – Weehawken, NJ
- Two Trees Domino Building E – Brooklyn, NY
- 211 McGuinness – Brooklyn, NY
- Modera Needham (Millcreek Residential) – Modera, MA
- The Point – Boston, MA
- Atrium Village – Chicago, IL
- The Falls on Bull Creek – Austin, TX
- Jefferson Landmark – Dallas, TX
- Lakeside Tower – Flower Mound, TX
- 460 16th St – Los Angeles, CA
- Metropolis Phase 1 & 2 – Los Angeles, CA
- Pacific Gate – San Diego, CA
- Blvd 6200 – Los Angeles, CA
- 1755 Argyle Apartments – Hollywood, CA
- Los Angeles Football Stadium – Los Angeles, CA
- Palazza Apartments – Washington, DC
- 301 M Street – Washington, DC



Mercedes House, NY
Pure White 1141



HOLLAND CONSTRUCTION

Vector @ Orenco Station, Hillsboro, OR

Piatra Grey 5003
Blizzard 2141



BOZZUTO

Emblem at Barracks Row, Washington, DC ————— White Attica 5143
Linen & Lens Photography Raven 4120



ALLIANCE REALTY PARTNERS

Vinz on Fairfax, Los Angeles, CA ————— Pure White 1141



F&T GROUP

One Fulton Square, New York, NY ————— Blizzard 2141



WORKSHOP/APD

Printing House, Manhattan, NY ————— *Pure White 1141*





CTI CONSTRUCTION INC.

Brooklyn, NY ————— Pure White 1141





ODA ARCHITECTURE

101W15TH, New York, NY ————— Raven 4120



TEN ARQUITECTOS

Mercedes House, New York, NY — Pure White 1141





SKIDMORE, OWINGS & MERRILL LLP

Manhattan House, Manhattan, NY —————
Blizzard 2141
Lagos Blue 4350
Buttermilk 4220



CLIVE WILKINSON AND DON BARANY

Toy Factory Biscuit Lofts, Los Angeles, CA ————— *Blizzard 2141*



LEESER ARCHITECTURE

Two Trees 60 Water St, New York, NY ————— Pure White 1141



INSPIRING RESIDENTIAL INTERIORS

Caesarstone quartz surfaces are in use in millions of homes around the world today, combining beauty with outstanding performance, allowing you to bring your design imagination to life. Nonporous, scratch resistant and highly resistant to stains, Caesarstone retains its beauty without sealants or waxes and is practically maintenance-free. With Caesarstone, you have freedom of design with seemingly endless application possibilities to add style and sophistication to your home.



MILA DESIGN

Miami, FL ————— Pure White 1141



ROBERT KERR ARCHITECTURE DESIGN

Malibu, CA ————— Pure White 1141





A&T CABINET MAKERS

Australia ————— Statuario Nuvo 5111



DARREN PALMER FOR FREEDOM KITCHENS

Australia ————— Cloudburst Concrete 4011



HUDSON RIDGE BUILDERS

Australia ————— Cloudburst Concrete 4011

WESTON KITCHENS & BATHROOMS

Toowoomba, Australia ————— Rugged Concrete 4033





INSPIRING RESIDENTIAL INTERIORS

MF ARCHITECTURE

Austin, Texas

Pure White 1141





DAN BRUNN ARCHITECTURE

Los Angeles, CA ————— Pure White 1141









BIG HOUSE LITTLE HOUSE

Australia ————— Raw Concrete 4004





Australia ————— Statuario Maximus 5031





NAR FINE CABINETRY

Sacramento, CA ————— Pure White 1141





BOUTIQUE HOMES VICTORIA

Australia ————— Topus Concrete 4023





Australia ————— Raven 4120



GEORGIA EZRA /
STUDIO EZRA DESIGN / TILESOFEZRA

Australia ————— Fresh Concrete 4001



HASTINGS DESIGN

Australia ————— London Grey 5000



MHOUSE

Toronto, Canada

Oyster 4030
Blizzard 2141
Misty Carrera 4141





TAYLOR PRESSLY ARCHITECTS / BUILT QA

Kew East, Australia

White Attica 5143



BUSBY CABINETS

Alachua, FL
Everett & Soule Photography

Clamshell 4130



SCOTT SALISBURY HOMES

Australia ————— Alpine Mist 5110
Hiro Ishino Photography



JASMINE McCLELLAND DESIGN

Fitzroy North VIC 3068, Australia ————— *Calacatta Nuvo 5131*
Jasmine McClelland Design – Interior Designer
Jonathan Tabensky – Photographer





F. FOGARTY DESIGN

Nashville, TN

Raw Concrete 4004

Mary Craven Photography



GUGGENHEIM ARCHITECTURE + DESIGN STUDIO

Portland, Oregon ————— *Blizzard 2141*
Noble Grey 5211
Frosty Carrina 5141



YS BUILT

Bellevue, WA ————— Blizzard 2141
Lara Swimmer Photography





Bellevue, WA ————— Blizzard 2141





DLUX DESIGN & CO.

Winnipeg, Canada ————— Statuario Maximus 5031

THREE BIRDS RENOVATIONS / CARRERA BY DESIGN

Australia ————— Calacatta Nuvo 5131



CAESARSTONE OUTDOORS

In outdoor applications*, it is recommended to use a canopy or covering that provides adequate shade. This protects the surface from direct exposure to the sun's harmful UV rays.



* While some customers have opted to install Caesarstone in outdoor applications – this use is not covered by our Lifetime Warranty.



JORDAN IVERSON SIGNATURE HOMES

Eugene, Oregon ————— Sleek Concrete 4003
KuDa Architectural Photography



CHADBOURNE + DOSS

*Woodblock Residence, Mercer Island, Washington
Benjamin Benschneider Photography*

Pure White 1141





THREE BIRDS RENOVATIONS

Australia ————— Noble Grey 5211



BRIAN MURPHY OF BAMCDI

Amoroso Place, Venice, CA — *Pebble 4030*
Rani Sikolski at Sky Photography LA



DAN BRUNN ARCHITECTURE

Los Angeles, CA ————— Pure White 1141



CONCETTO

Caesarstone's inspirational masterpiece collection, the unique Concetto range, is an unmatched collection of extraordinary surfaces hand-made from individually cut and bound semi-precious stones.

A harmonious blend of art, nature and technology Concetto is created by fusing nature's hues and designs with individually cut semi-precious stones to form the ultimate luxury stone surface.

Made from completely natural materials, these semi-precious stones radiate the most vivid colors and form the most breathtaking structures. Each surface takes a week to complete by a single skilled craftsman and is totally unique with its own intrinsic shadings and patterns. Some of the semi-precious stones in the Concetto Collection are breathtakingly translucent and can be backlit for added effect.



Semi-precious stones have been known throughout antiquity and the world for their energy-giving capabilities. The result are surfaces that are not only uniquely beautiful, but also timeless works of art.







MARILYN DE VAAL & FRANK PIETERSE
OF ART-LINE STUDIO

Moonen Yachts, 's-Hertogenbosch, Netherlands — *Puro 8141*

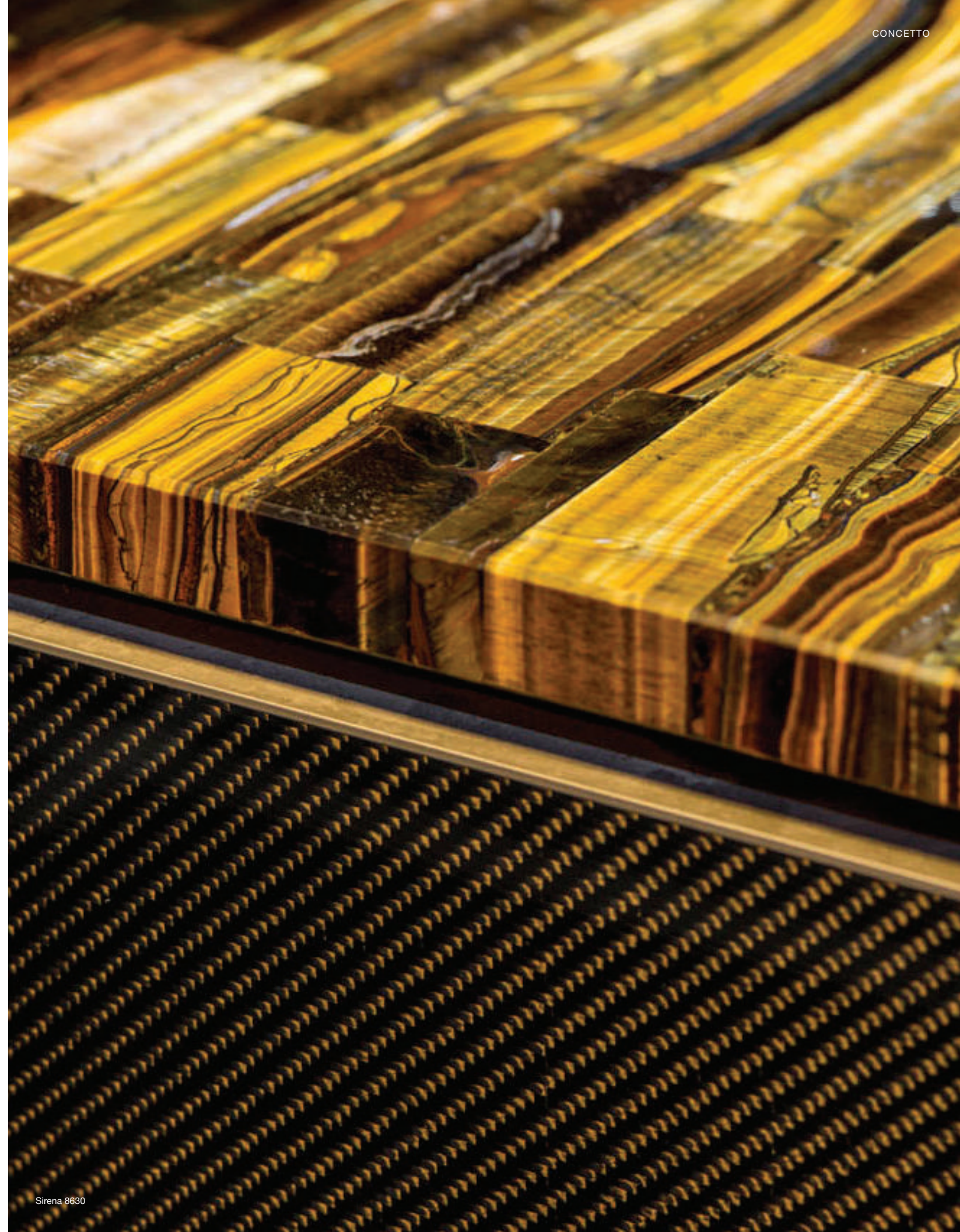




LEE HARDCASTLE OF ENIGMA INTERIORS

Brisbane, Australia

Sirena 8630



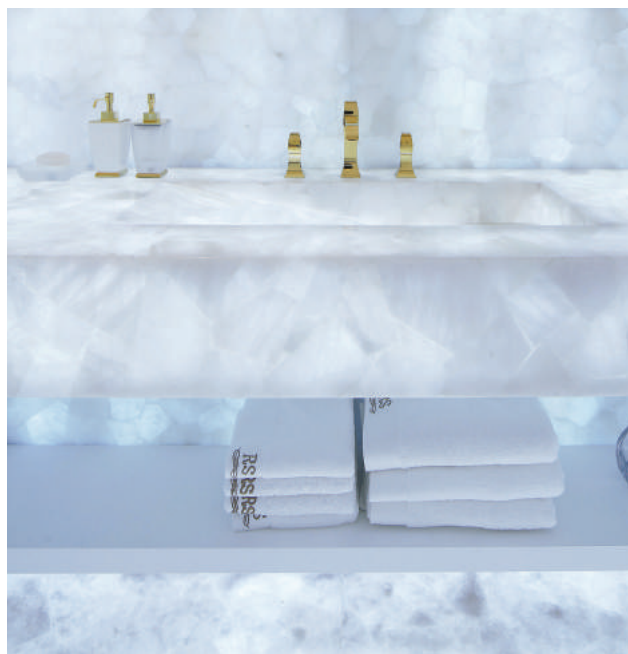
Sirena 8630



FREEDOM KITCHENS

Queensland, Australia — Puro 8141
Maurel Aucar Photography



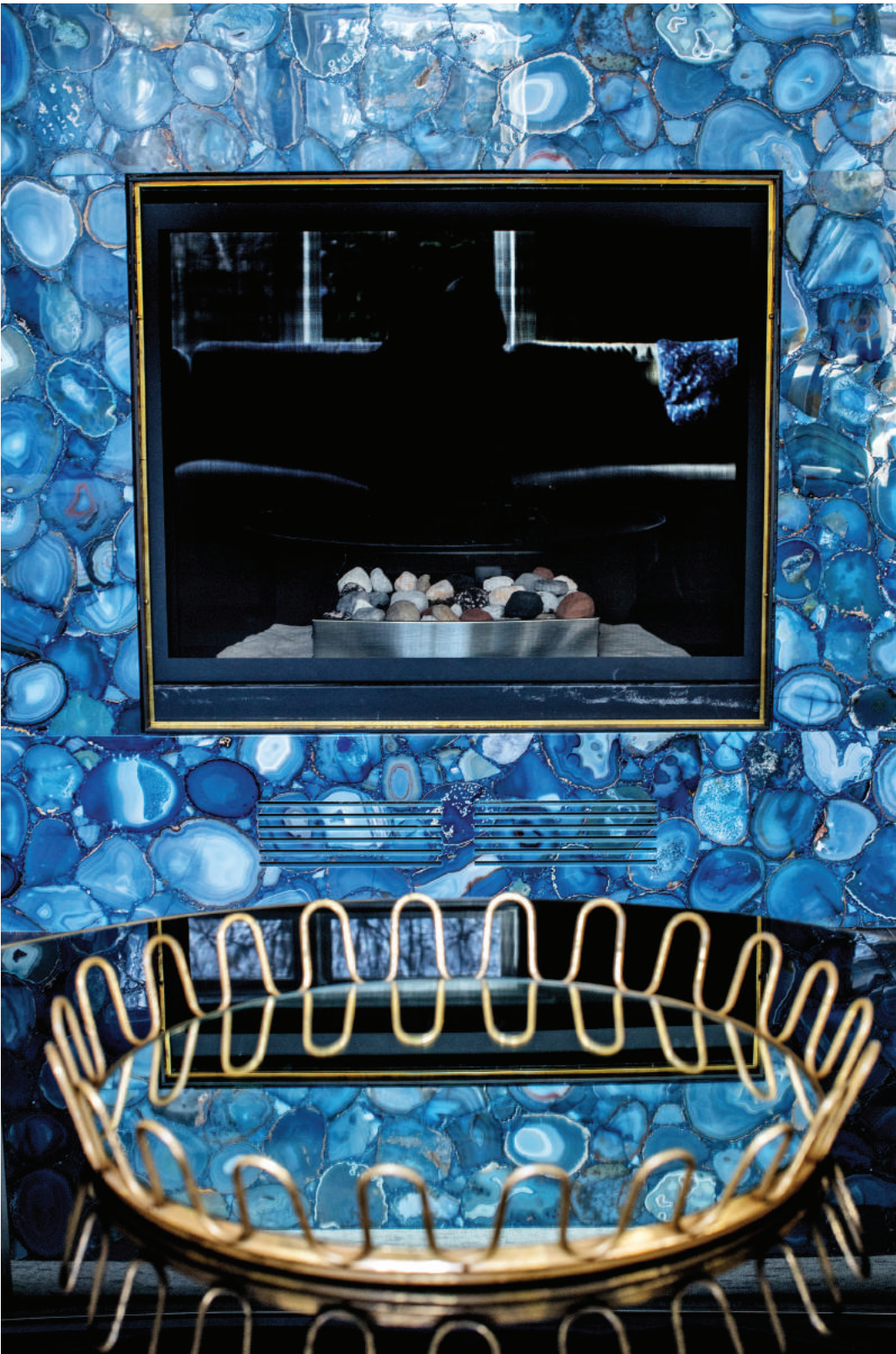


EURO CUCINA

Milan, Italy ————— Puro 8141

MADISON TAYLOR DESIGN

Ontario, Canada ————— Profondo 8531





SUBLIME ARCHITECTURAL INTERIORS

North Manly NSW, Australia — Profondo 8531



North Manly NSW, Australia — Profondo 8531



Profondo 8531



Jaime Hayon
Stone Age Folk Installation

BEYOND COUNTERTOPS

Conceptualization is where any plan begins, but the application of that plan is its true test. Experimentation and collaboration are the foundation of the partnership between Caesarstone and its creative collaborators. The full realization of a specific design can only be achieved with the right tools. Caesarstone provides the freedom to create custom spaces and unique applications that garner awards and international acclaim – endorsing those who use the product as visionaries.



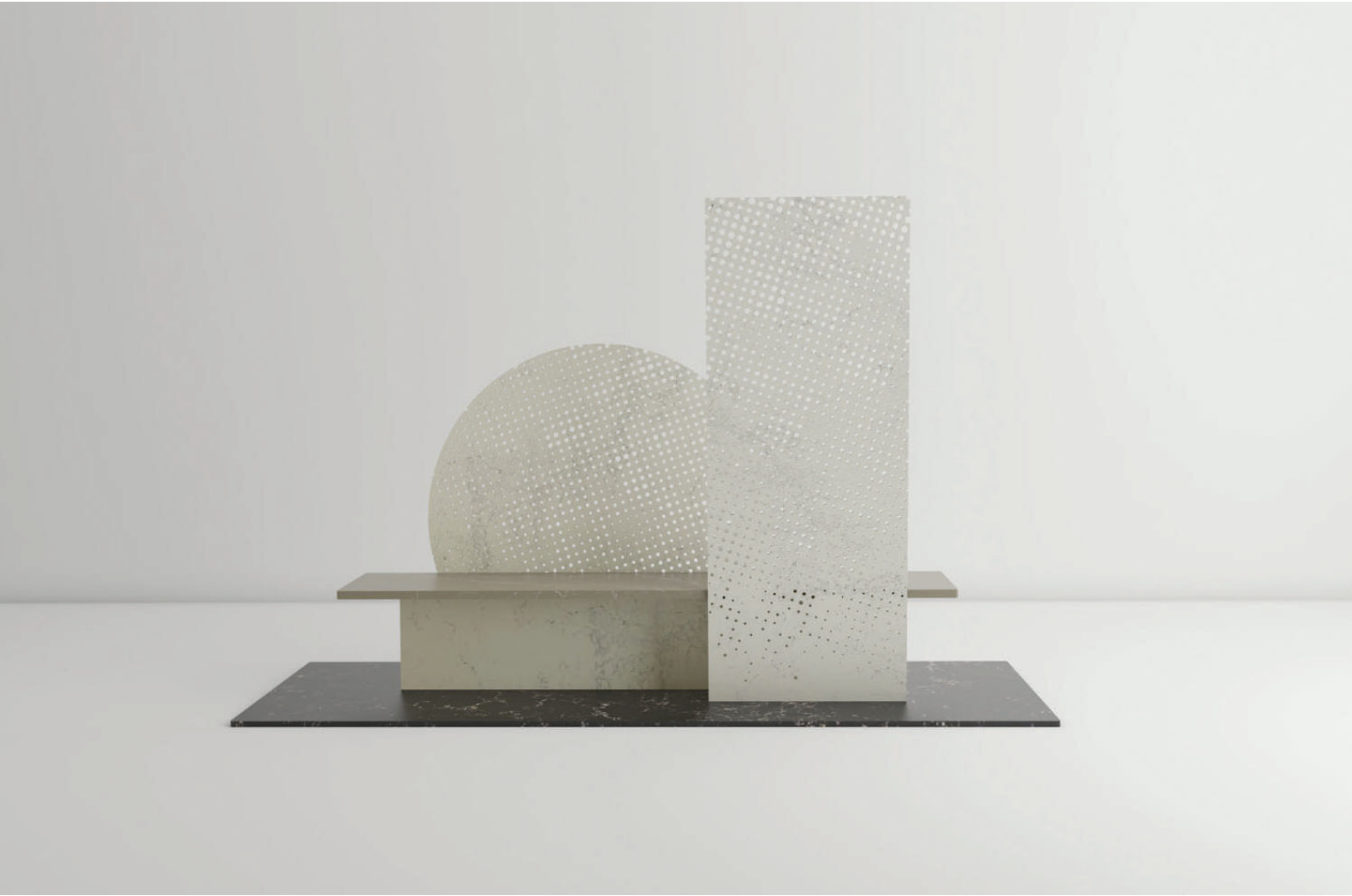
SNARKITECTURE STUDIO

Altered States ————— *Milan Design Week 2018*



PRODUCKS STUDIO

A Moon Bench ————— Israeli Design Week 2017



OBA STUDIO

What A Wonderful World ————— Annual Design Forum



RAW EDGES STUDIO

Islands ————— *Milan Design Week 2014*





RAW EDGES STUDIO

Book of Details

Milan Design Week 2014



PHILIPPE MALOUIN

Movements ————— *Milan Design Week 2015*



PHILIPPE MALOUIN

Planters ————— Milan Design Week 2016





BAKER HESSELDENZ STUDIO

Tuscon, Arizona ————— *5100 Vanilla Noir*





SHLOMI HAZIZA

H Studio ————— *Profondo 8531*



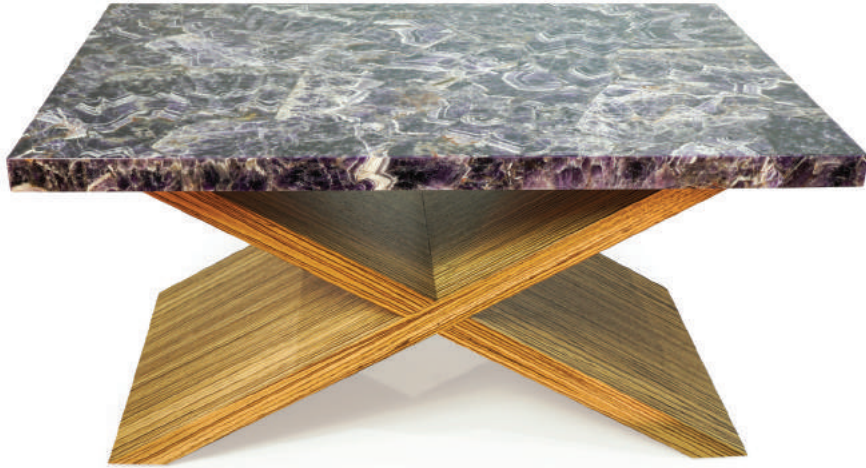


CECIL BAKER + PARTNERS

500 Walnut, Philadelphia, PA

Nebbia 8311

Westbury, NY ————— *Nebbia 8311*
Viola 8551





TOM DIXON

The Restaurant ————— *Milan Design Week 2016*





THOMAS BERINSTEIN

WSM Studio, Toronto, Canada — Milan Design Week 2016



KITCHEN TRENDS BOOK

Caesarstone introduces its latest book, looking at the trends that shaped the design scene in 2018. The book explores kitchen and tech innovations, but also the way kitchens have become the central hub of the home. From lifestyle and cultural trends to surface treatments and finishes, four stories take you on a journey to a better knowledge of current aesthetics. Complete with a color and material palette in the shape of a stand-alone tangram, this book offers key insights to create tomorrow's collections. View the Kitchen Trends book on our website: www.caearstoneus.com/newsroom



Past and future, work and leisure, fashion and interiors, home and retail, craft and digital... We live in a time of blurring boundaries, a time where opposites balance, inspire and complement one another. In pursuit of a new equilibrium, we return to ancient formulas of ideal proportions and explore historic references to redefine perfection. This intellectual approach to creative thinking sees a fresh, timeless aesthetic arise, achieved by thoughtful and refined designs that renew Modernism.



The long-term, industrial trend will continue to be important in seasons to come, but will evolve towards a more urban and yet increasingly poetic and light-hearted direction. Heavy construction materials such as concrete and cement will be softened by light, feminine tints; new composites will be crafted with colorful industrial waste; and fanciful constructions will add a fun element to rough silhouettes. The serious industrial aesthetic is taking an experimental and playful stance.



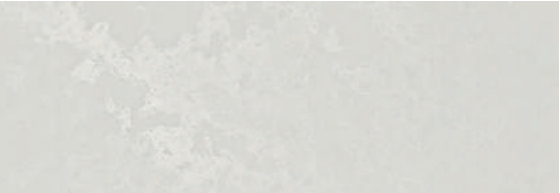
Our world is moving faster than ever and time comes in short supply, so we try to live more slowly, design more thoughtfully and find joy in quieter, softer environments. We pare back to the essentials to make room in our minds, lives and homes. Our living spaces have a peaceful, calming quality that provide a visually-light haven that soothes the eye but also the mind. This is an acutely minimal direction, elevated by careful details and high-quality finishes.



EXPLORE OUR LATEST COLLECTION

The Metropolitan Collection leads the new industrial trend in urban interiors. Oxidized steel, untreated wood and raw concrete are just some of the robust materials being used by leading edge designers.

By innovating cutting-edge technology, Caesarstone has achieved these authentic finishes and patinas in quartz for the very first time – a breakthrough that you can literally feel! Engaging tactility and heightened emotion are embedded within each of the Metropolitan Collection's lively designs.



Cloudburst Concrete 4011



Airy Concrete 4044



Frozen Terra 4601



Topus Concrete 4023



Excava 4046





Cloudburst Concrete
4011

◀ Full Slab (3050 mm x 1440 mm)
▼ Scale Swatch (1:1 scale)



Excava
4046

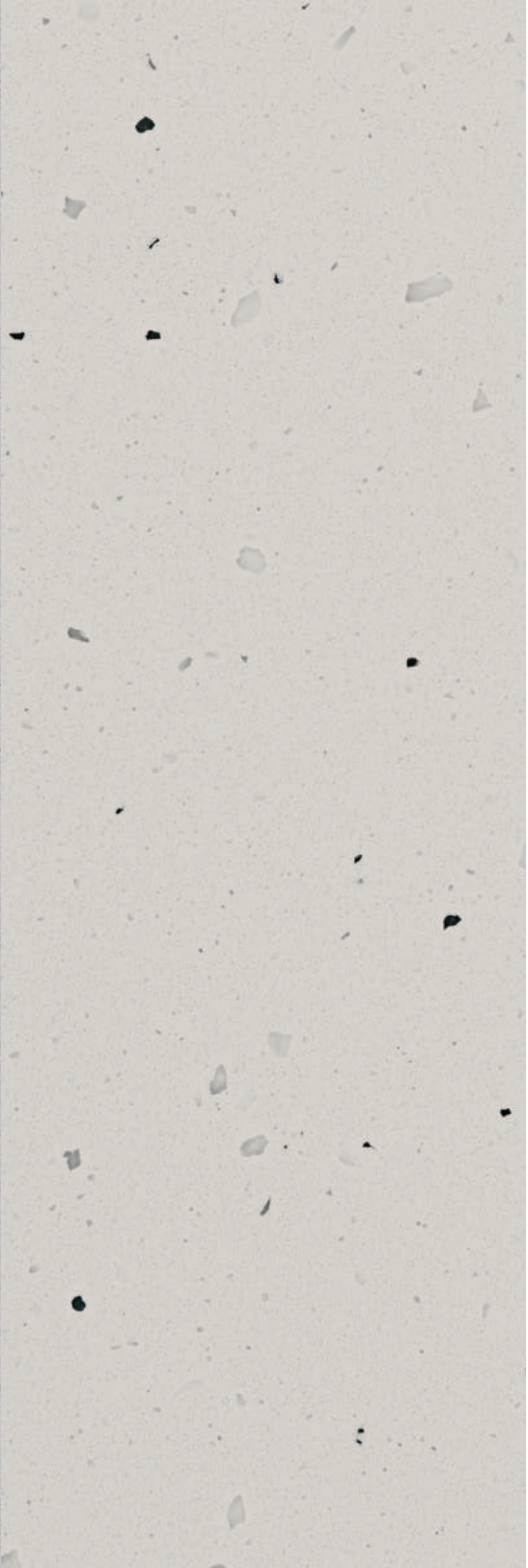
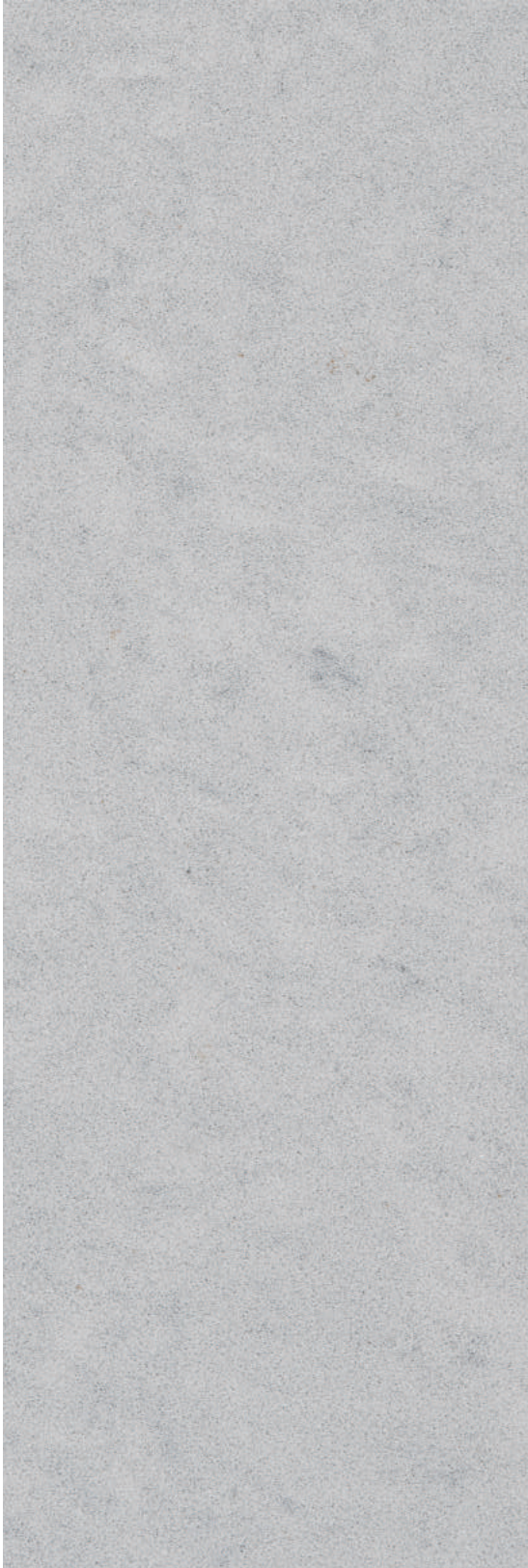
Full Slab (3050 mm x 1440 mm) ▶
Scale Swatch (1:1 scale) ▼





Flannel Grey
4643

◀ Full Slab (3050 mm x 1440 mm)
▼ Scale Swatch (1:1 scale)



Frozen Terra
4601

Full Slab (3050 mm x 1440 mm) ▶
Scale Swatch (1:1 scale) ▼



Intense White
6011

◀ Full Slab (3050 mm x 1440 mm)
▼ Scale Swatch (1:1 scale)



Topus Concrete
4023

Full Slab (3050 mm x 1440 mm) ▶
Scale Swatch (1:1 scale) ▼





Airy Concrete
4044

- ◀ Full Slab (3050 mm x 1440 mm)
- ▼ Scale Swatch (1:1 scale)



Countertop: Rugged Concrete 4033
Backsplash: Excava 4046

SUPERNATURAL COLLECTION

The Supernatural Collection is a reflection of the latest design trends, inspiring you to create a unique ambience and look for your home. It combines the beauty of nature with the durability and performance you'd expect from Caesarstone quartz surfaces.



Statuario Maximus 5031



Empira White 5151



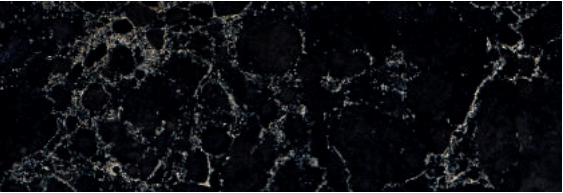
White Attica 5143



Noble Grey 5211



Bianco Drift 6131



Vanilla Noir 5100



SUPERNATURAL COLLECTION

Supernatural combines the beauty of nature with the superlative performance of Caesarstone quartz surfaces.



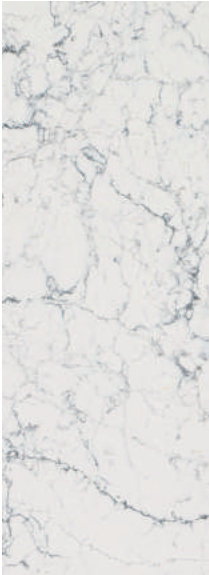
Frosty Carrina
5141 + Honed ⓘ *



London Grey
5000 + Honed ⓘ *



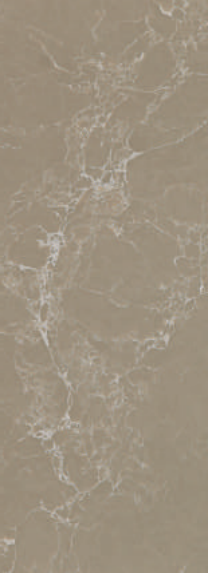
Empira White
5155



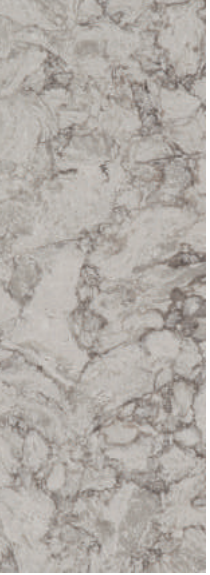
White Attica
5143 ⓘ *



Georgian Bluffs
6134 *



Tuscan Dawn
5104 *



Moorland Fog
6046 *



Symphony Grey
5133



Statuario Nuvo
5111 + Honed ⓘ *



Calacatta Nuvo + Honed
5131 + Honed ⓘ *



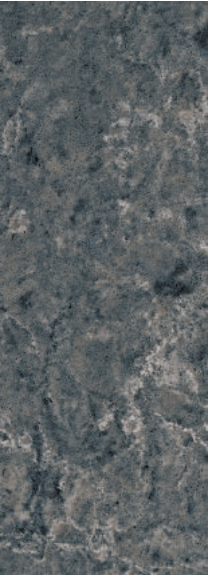
Statuario Maximus
5031 + Honed *



Alpine Mist
5110 + Honed *



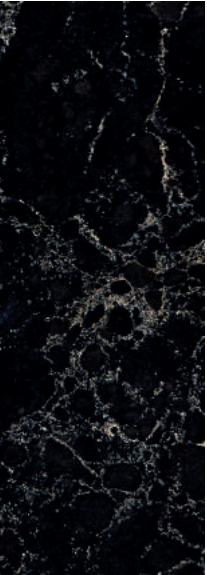
Turbine Grey
6313 *



Coastal Grey
6003 *



Piatra Grey
5003 ⓘ



Vanilla Noir
5100 *



Noble Grey
5211 *



Cosmopolitan White
5130 *



Bianco Drift
6131 ⓘ *



Montblanc
5043 *



Taj Royale
5212 *



Dreamy Marfil
5220 + Honed *



Woodlands
6338 *

- * Available in 1.3 cm
- ∞ Contains Recycled Content
- ⓘ Available in Jumbo
- Ⓜ Only available in Rough finish
- Ⓢ Only available in Concrete finish

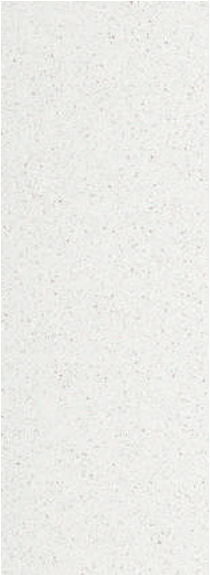
Shade and graining of actual product may vary from printed sample.

CLASSICO COLLECTION

This classic, multi-color collection ranges from salt-and-pepper motifs to vivid color blends, ideal for a variety of residential and commercial applications.



Pure White
1141 ⓘ *



Ocean Foam
6141



Blizzard
2141 ⓘ *



Intense White
6011 ☑ **NEW**



Organic White
4600 ⓘ *



Eggshell
3141 *



Nougat
6600 *



Haze *
2030



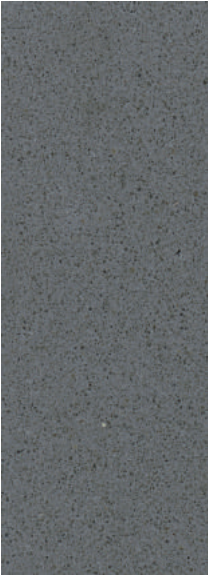
Clamshell
4130 *



Pebble
4030 + Honed ⓘ *



Flannel Grey
4643 **NEW**



Concrete
2003 *



Raven
4120 *



Jet Black
3100



Ginger
4330 *

- * Available in 1.3 cm
- ∞ Contains Recycled Content
- ⓘ Available in Jumbo
- ☑ Only available in Rough finish
- ☑ Only available in Concrete finish

Shade and graining of actual product may vary from printed sample.

METROPOLITAN COLLECTION

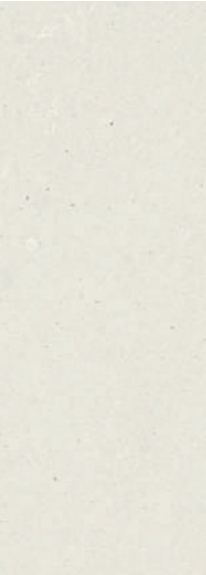
Caesarstone has taken on the new raw trend of industrial design and pushed it further with the innovative Metropolitan Collection.



Sleek Concrete
4003 *



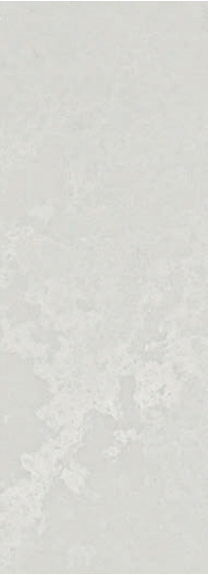
Raw Concrete
4004



Fresh Concrete
4001 *



Rugged Concrete
4033 *



Cloudburst Concrete
4011 **NEW** *



Airy Concrete
4044 **NEW**



Topus Concrete
4023 **NEW**



Frozen Terra
4601 **NEW**



Excava
4046 **NEW**

- * Available in 1.3 cm
- Contains Recycled Content
- Available in Jumbo
- Only available in Rough finish
- Only available in Concrete finish

Shade and graining of actual product may vary from printed sample.



Three Birds Renovations
Noble Grey 5211

FINISHES

Polished

An elegant and highly reflective surface that is smooth to the touch.

Honed

A satiny finish with low sheen and a natural, less formal aesthetic.

Concrete

A lightly textured concrete complexion that adds a sensorial dimension to any space. The Concrete finish has a soft earthiness with low light reflection, similar to Honed but with a tactile effect.

Rough

This rich, complex, technologically advanced surface offers a compelling tactile effect, while still retaining a smooth profile that is inviting to touch. The Rough finish has a distinctive, courser look with low light reflection, inspiring a modern industrial vibe.

CONCETTO COLLECTION

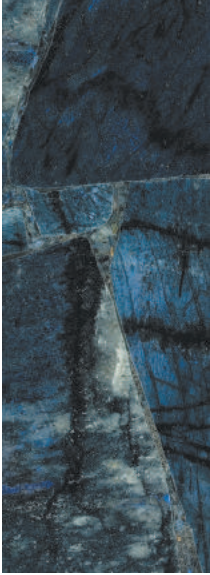
Concetto presents 10 individually cut and bound semi-precious stones in elegant hand-made surfaces. Featuring unique colors and translucent surfaces, Concetto will enhance the design of any luxurious interior.



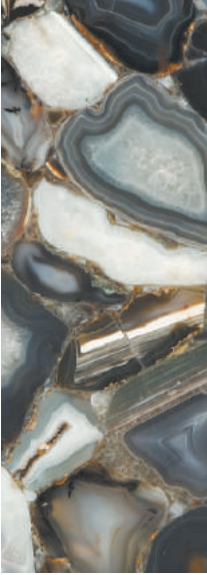
Puro
8141



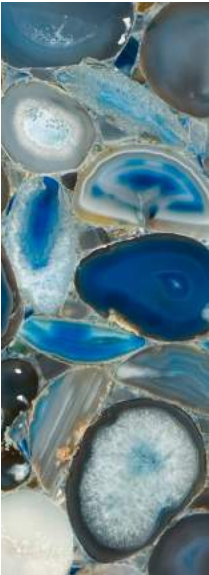
Viola
8551



Indigo
8540



Nebbia
8311



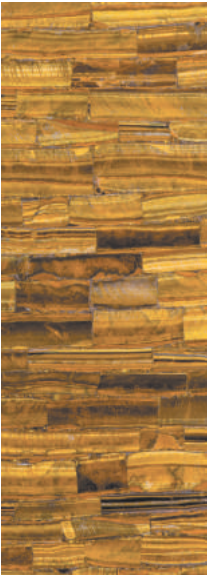
Profondo
8531



Sfumato
8310



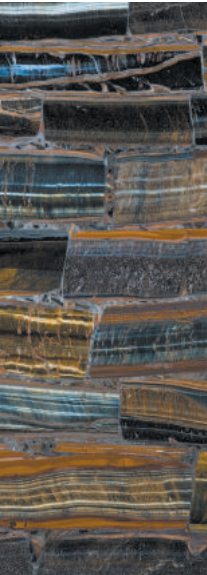
Albero
8330



Sirena
8630



Legno
8331

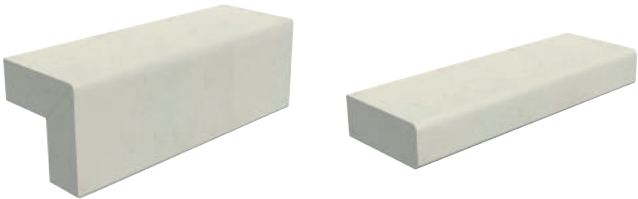


Fiero
8616

ANATOMY

Edge Profiles

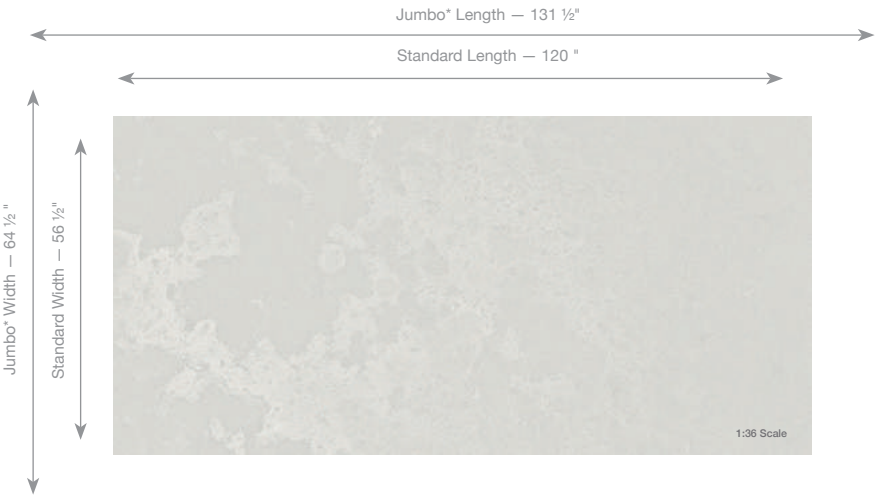
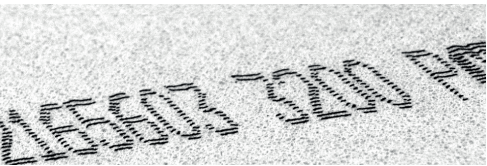
The unique edge properties and durability of Caesarstone quartz surfaces allow for a wide range of edge profile design options. Many edge profiles are possible, from a standard edge to laminated or mitered edges which create the appearance of a thicker slab. **All edge details should have minimum 1/8” radius on any profile, for both top and bottom edges. For high-traffic areas, 1/4” minimum radius is suggested.** Caesarstone quartz surfaces and countertops can be fabricated with a variety of different edge options such as: double radius, bevel, double bullnose, miter edge, radius, ogee bullnose and triple ogee.



Miter Edge
Minimum Radius: 1/8"

Caesarstone® Slab ID

The underside of every Caesarstone slab is uniquely stamped with identification information establishing authenticity. Beware of imitation slabs.



Standard Size

120" (144cm) x 56 1/2" (305cm)

Jumbo Slab* Size

131 1/2" (334cm) x 64 1/2" (163cm)

Standard Size Weight

1.3cm	315 lbs (143kg)
2cm	485 lbs (220kg)
3cm	728 lbs (330kg)

Jumbo Slab* Weight

2cm	572 lbs (259kg)
3cm	852 lbs (386kg)

BULLNOSE



PENCIL EDGE



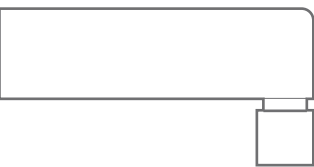
BEVELLED EDGE



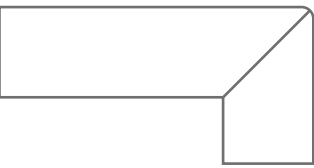
SHARK NOSE



SHADOW EDGE



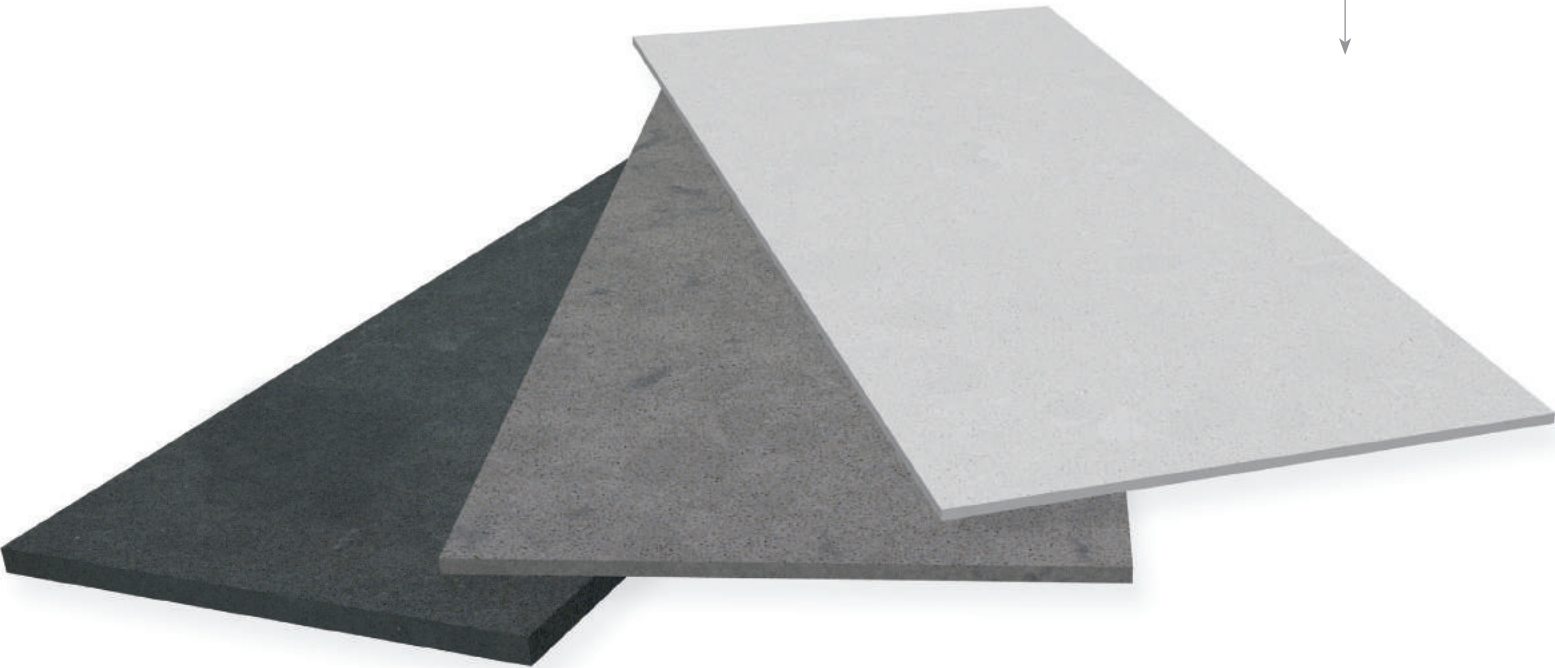
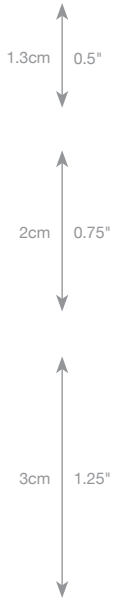
MITRED EDGE



LAMINATED EDGE

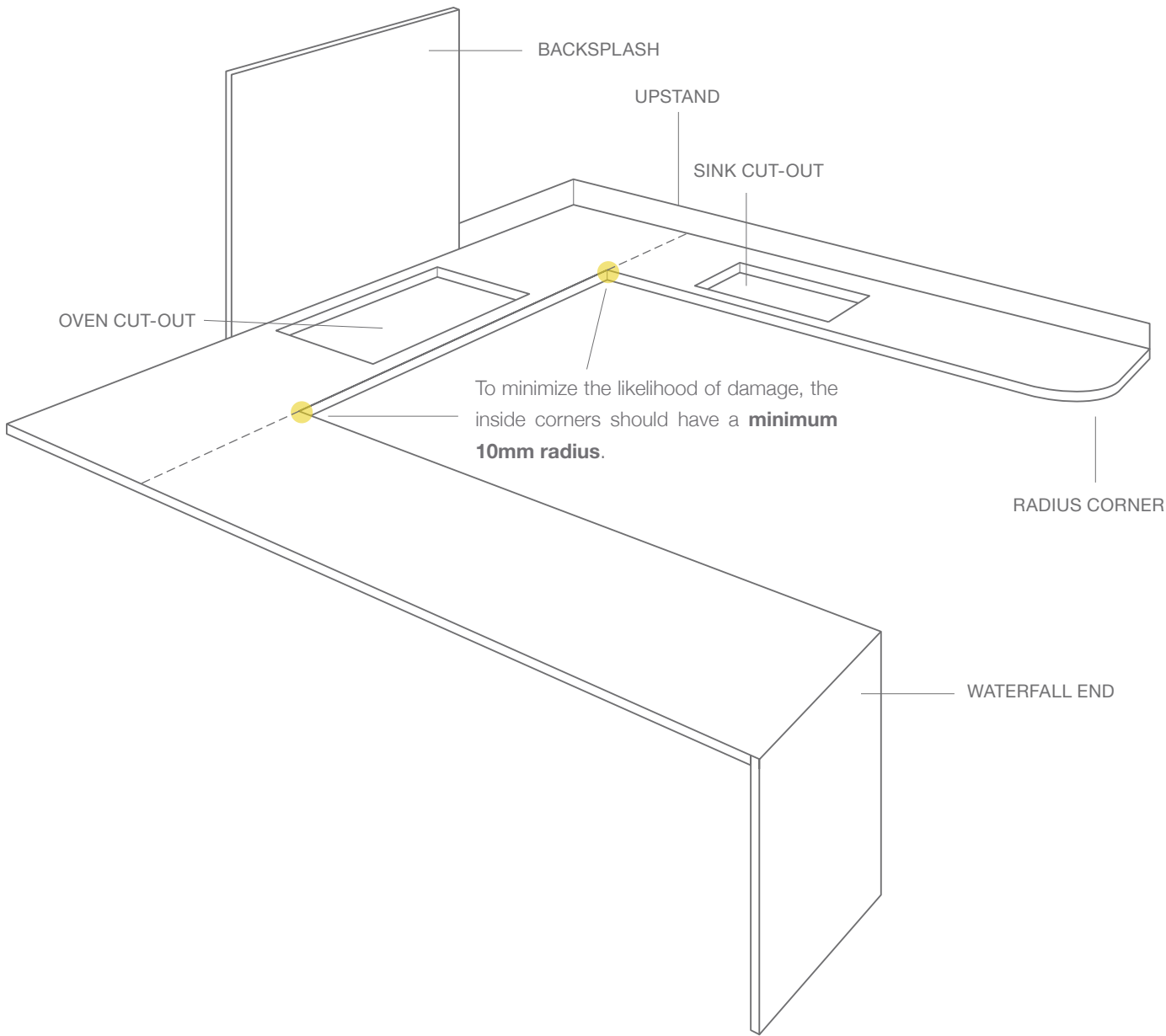


THICKNESS:

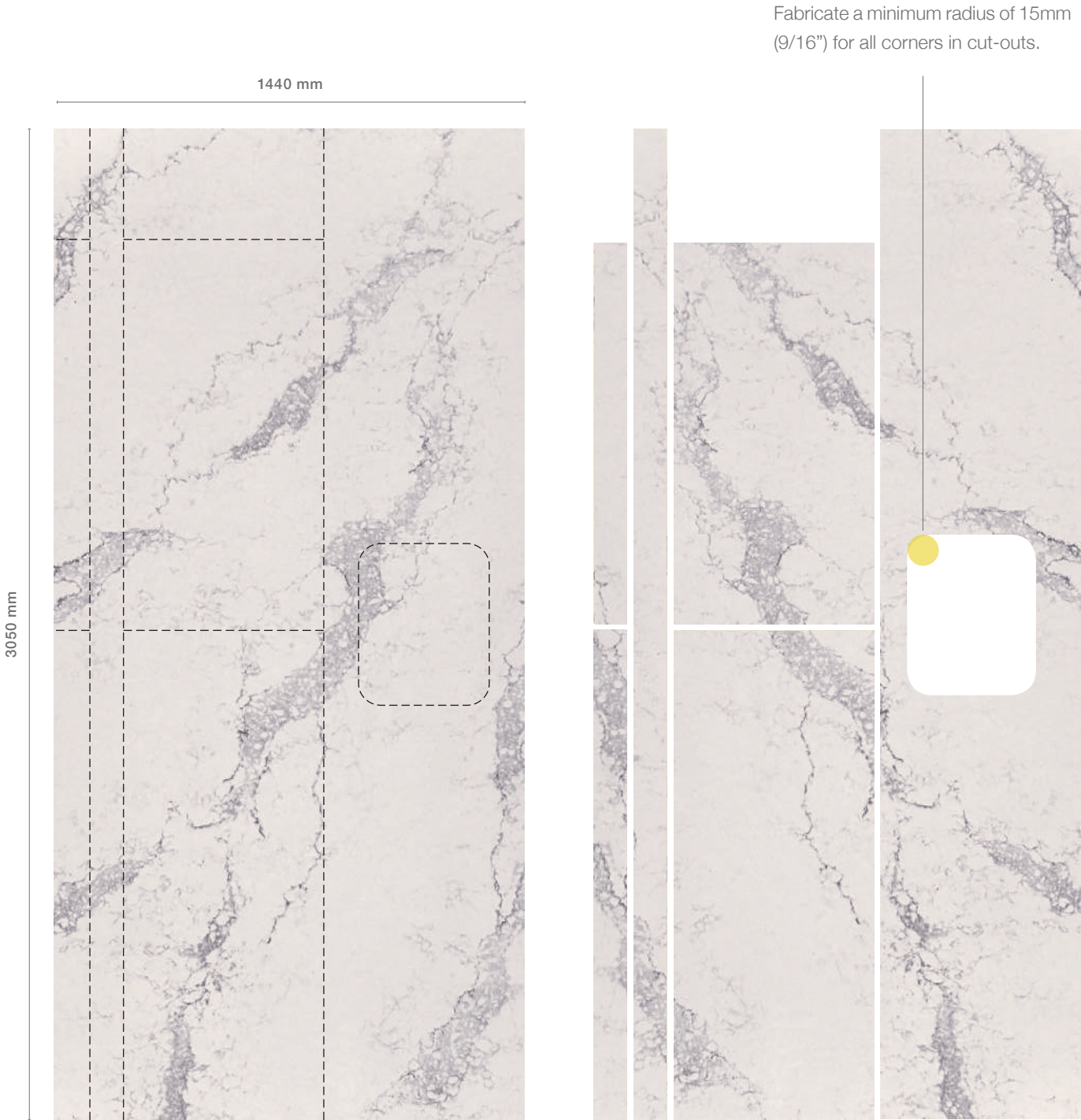


Anatomy of a Worktop

Caesarstone quartz surfaces can be fabricated into a number of beautiful details that provide both practical as well as aesthetic benefits.



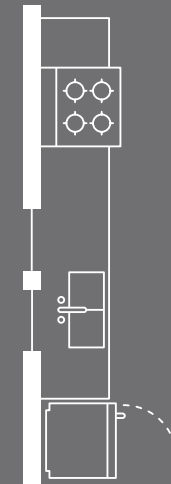
The below example shows how a single slab of Caesarstone might be cut for a compact U-shaped kitchen, showing a cut-out for an undermount sink and allowing for a 100mm upstand around the entire length of the work surface and a 10mm overhang.



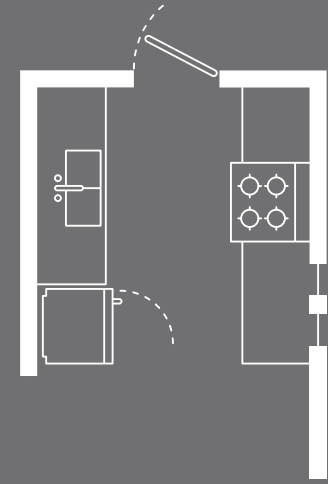
Kitchen Plans

These are some of the most popular kitchen layouts, with something to suit most spaces.

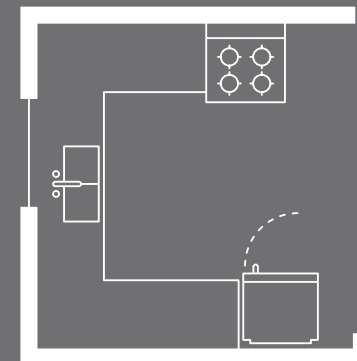
ONE WALL



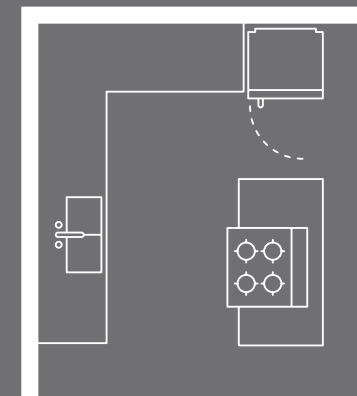
THE GALLEY



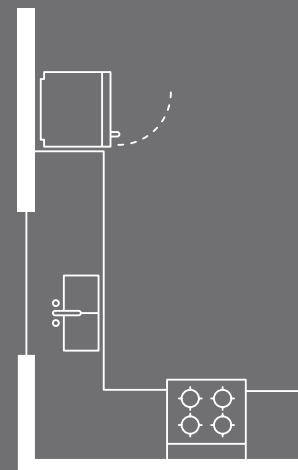
THE U



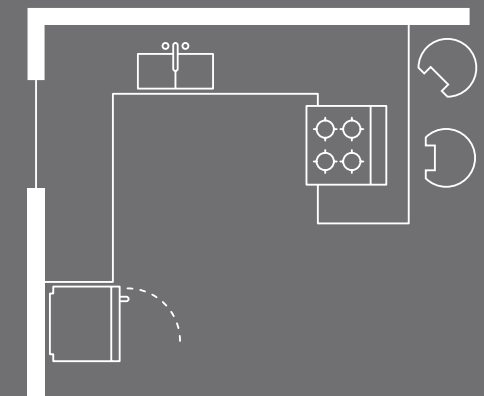
THE ISLAND



THE L



THE PENINSULA



Technical Data

Test Performed	Test Standard	Results	Remarks
Physical Properties			
Absorption	ASTM C 97	0.02%	Low absorption contributes to stain resistance and sanitation of Caesarstone.
Density	ASTM C 97	150.45 lb/ft³ (2.41 g/cm³)	½" Caesarstone = 100.3 lb/ft³ ¾" Caesarstone = 150.45 lb/ft³ 1¼" Caesarstone = 250.75 lb/ft³
Flexural Strength¹	ASTM C 880	6,500–10,770 psi (457.1–757.4 kg/cm)	Caesarstone is stronger than most natural stones.
Thermal Expansion¹	ASTM E 228	0.012%–0.019%	2000 Series: 9.6; 3000 Series: 7.9; 7000 Series: 7.9; 9000 Series: 7.8
Durability			
Abrasion Resistance¹ (Taber Abraser)	ASTM C 501	216–696	Caesarstone resists wear and abrasion.
Freeze-Thaw Resistance	ASTM C 1026	No defects	15 freeze-thaw cycles.
Mohs Hardness	DIN EN 101	Quartz = 7 on Mohs scale	Quartz can only be scratched by materials as hard as topaz (8), corundum (9), or diamond (10).
Ball Impact Resistance¹,² (Fracture)	NEMA LD 3.3.8	114"–164" (2895–4166 mm)	Caesarstone resists damage from falling objects.
Stain and Chemical Resistance and Cleanability			
Stain Resistance¹,⁴	ANSI Z 124.6	32–48 Pass (Passing criterion is 64)	Tested with 16-hour exposure to crayon, shoe polish, ink, gentian violet solution, beet juice, grape juice, lipstick, hair dye, iodine, and tea.
Wear and Cleanability	ANSI Z 124.6	Pass	Wear: Passes 10,000 scrub cycles. Cleanability: Loss of light reflectance after 25 cycles is 1%–2%. (Passing criterion is <5%.)
Chemical Resistance	ANSI Z 124.6	Pass	No visual damage due to 16-hour exposure to naphtha, ethyl alcohol, amyl acetate, acetone, vinegar, hydrogen peroxide, lye, sodium hypochlorite, trisodium phosphate, and pine oil.
Resistance to Chemical Substances¹,³	ASTM C 650	No effect	24-hour exposure to solutions of acetic acid, ammonium chloride, citric acid, lactic acid, phosphoric acid, sulfamic acid, sodium hypochlorite, hydrochloric acid or 3% potassium hydroxide. Some models were affected by 24-hour exposure to 10% potassium hydroxide.
Thermal Resistance			
Boiling Water Resistance	NEMA LD 3.3.5	No effect	While short-term contact with hot materials up to temperature tested will not harm Caesarstone, hot cookware should not be placed directly on quartz surface; use insulated hot pads or trivets.
High Temperature Resistance	NEMA LD 3.3.6	No effect	No effect (no change in color or surface finish) when tested at 356°F/180°C.
Safety			
Cigarette Test	ANSI Z 124.6	No ignition or glow	Resistant to ignition by cigarettes.
Coefficient of Friction (Slip Resistance)	ASTM C 1028	Heel Polished Neolite: 0.84 Leather: 0.44 Rubber: 1.21 Honed Neolite: 0.56 Leather: 0.54 Rubber: 0.80	Dry Wet 0.51 0.43 0.54 0.72 0.57 0.76
Surface Burning	ASTM E 84	Flame spread = 5 Smoke developed = 25	Caesarstone is Class 1 per International Code Council (ICC) and Class A per National Fire Protection Agency (NFPA).
Resistance to Fungi and Bacteria	ASTM G 21	Rating = 0 (no traces of growth)	Dense and nonporous, Caesarstone is inherently resistant to mold.
Smoke Toxicity	UPITT	LC 50 = 140.7g	Caesarstone meets New York City Building Code requirement that materials have LC 50 greater than 19.7g. The higher the value, the less toxic the material.
Radiation	ANSI/IEE N42.14 1999	²²⁶RA = 1.4–6.7 ²³²Th = 1.4–3 ⁴⁰K = <3–30.3 (Bq/kg dry weight)	The level of radioactivity is relatively low in comparison to similar building materials. Caesarstone meets European standards stated in Radiation Protection No. 112 – Radiological Protection Principals Concerning the Natural Radioactivity of Building Materials.
Certifications and Approvals			
ISO 14001	Environmental Management Systems	Certified by IQNet	Certificate # IL-44679
ISO 9001	Quality Systems – Model for Quality Assurance in Production, Installation, and Servicing	Certified by IQNet	Certificate # IL-29318
OHSAS 18001	Health and Safety Systems	Certified by IQNet	Certificate # IL-43226
Red List Free Declaration	LBC Compliant		Available upon request
GREENGUARD	Certified for "Indoor Air Quality" and "Children and Schools"		Caesarstone is a low-emitting material.
New York City Materials and Equipment Acceptance (MEA)		Approved by City of New York	MEA 202-08-M
ANSI/NSF Standard 51	Food Equipment Materials	Listed by NSF	Safe to use in food preparation areas.
HPD 2.1	Quartz Countertops with and without Recycled Materials	67 Approved Colors	Meets latest HPD standards



Cloudburst Concrete 4011



T 877 9QUARTZ (978-2789)
F 818 799 0099

info@caesarstoneus.com
www.caesarstoneus.com

© Copyright Caesarstone 2018. All Rights Reserved.
Caesarstone® is a registered trademark.

